

OCTOBER 18, 1988

PAGE ONE

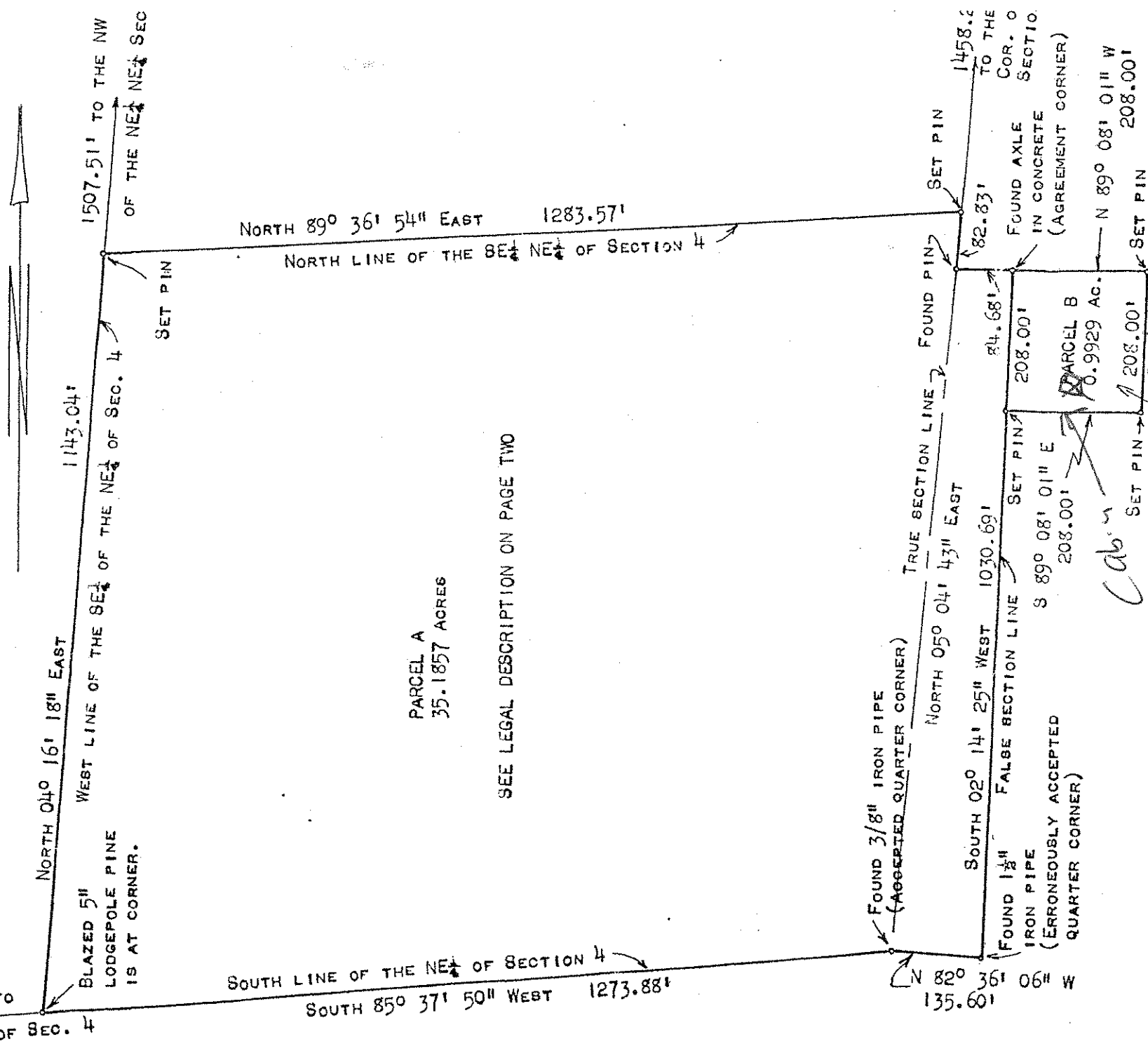
1205 PIERCE STREET
LAKEWOOD, COLORADO 80214
BOUNDARY SURVEY
CERTIFICATE NO. 88062

Herbert K. Linn

CHAUNCEY WALKER

SCALE: 1 INCH EQUALS 200 FEET REGISTERED LAND SURVEYOR
BEARINGS ARE FROM POLARIS OBSERVATION.

PLAT OF BOUNDARY SURVEY OF TWO PARCELS OF LAND IN THE NE 1/4 OF SECTION 4 AND THE NW 1/4 OF SECTION 3, TOWNSHIP 6 SOUTH, RANGE 71 WEST OF THE SIXTH PRINCIPAL MERIDIAN, IN THE COUNTY OF JEFFERSON, STATE OF COLORADO.



PARCEL A
35.1857 ACRES

SEE LEGAL DESCRIPTION ON PAGE TWO

SURVEYOR'S CERTIFICATE:

I CERTIFY THAT I HAVE, DURING THE SUMMER AND FALL OF 1988, SURVEYED THE PROPERTY HEREON SHOWN, SET OR FOUND CORNER MARKERS AS INDICATED, WRITTEN THE LEGAL DESCRIPTIONS APPEARING ON PAGE TWO OF THIS INSTRUMENT AND PREPARED THIS MAP.

I FURTHER CERTIFY THAT THE SURVEY, LEGAL DESCRIPTIONS AND MAP ARE ACCURATE AND TRUE, TO THE BEST OF MY KNOWLEDGE AND BELIEF.

SEE LEGAL DESCRIPTION ON PAGE TWO

BOOK 88, PAGE 41

PARCEL B (0.9929 AC.)

FOUND AXLE IN CONCRETE (AGREEMENT CORNER)

N 89° 08' 01" W 208.00'

1144.42' TO AGREEMENT CORNER (BOOK 88, PAGE 41)

FOUND 3/8" IRON PIPE (AGGREGATED QUARTER CORNER)

FOUND 1 1/2" IRON PIPE (ERRONEOUSLY ACCEPTED QUARTER CORNER)

FOUND 1 1/2" IRON PIPE (ERRONEOUSLY ACCEPTED QUARTER CORNER)

FOUND 3/8" IRON PIPE (AGGREGATED QUARTER CORNER)

FOUND AXLE IN CONCRETE (AGREEMENT CORNER)

N 89° 08' 01" W 208.00'

1144.42' TO AGREEMENT CORNER (BOOK 88, PAGE 41)

FOUND 3/8" IRON PIPE (AGGREGATED QUARTER CORNER)

FOUND 1 1/2" IRON PIPE (ERRONEOUSLY ACCEPTED QUARTER CORNER)

FOUND 1 1/2" IRON PIPE (ERRONEOUSLY ACCEPTED QUARTER CORNER)

Herbert K. Linn

HERBERT K. LINN

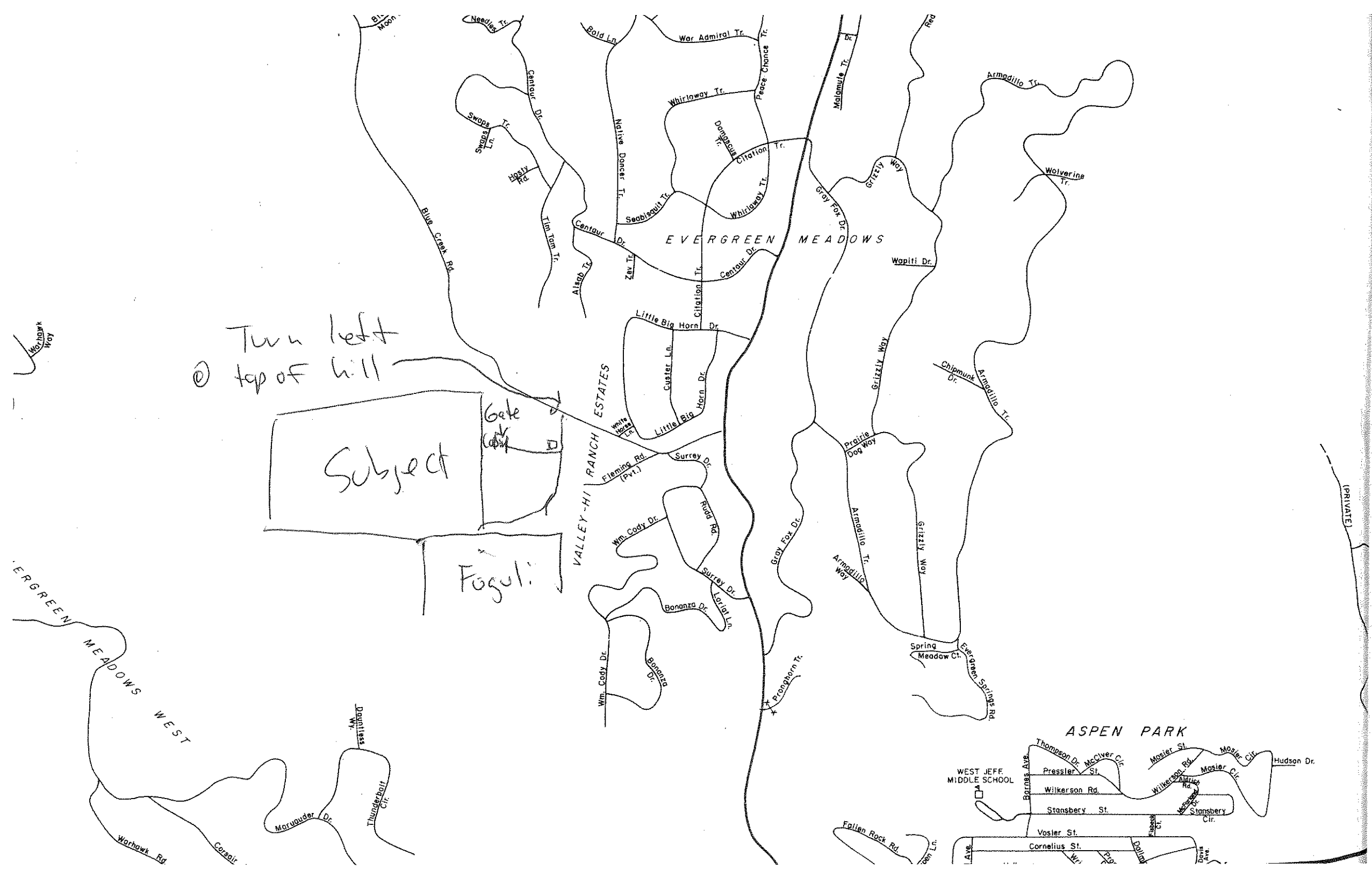
lock box is
DLUS

Turn left
@ top of hill

Subject

Fogel

Gate



(PRIVATE)

ASPEN PARK

