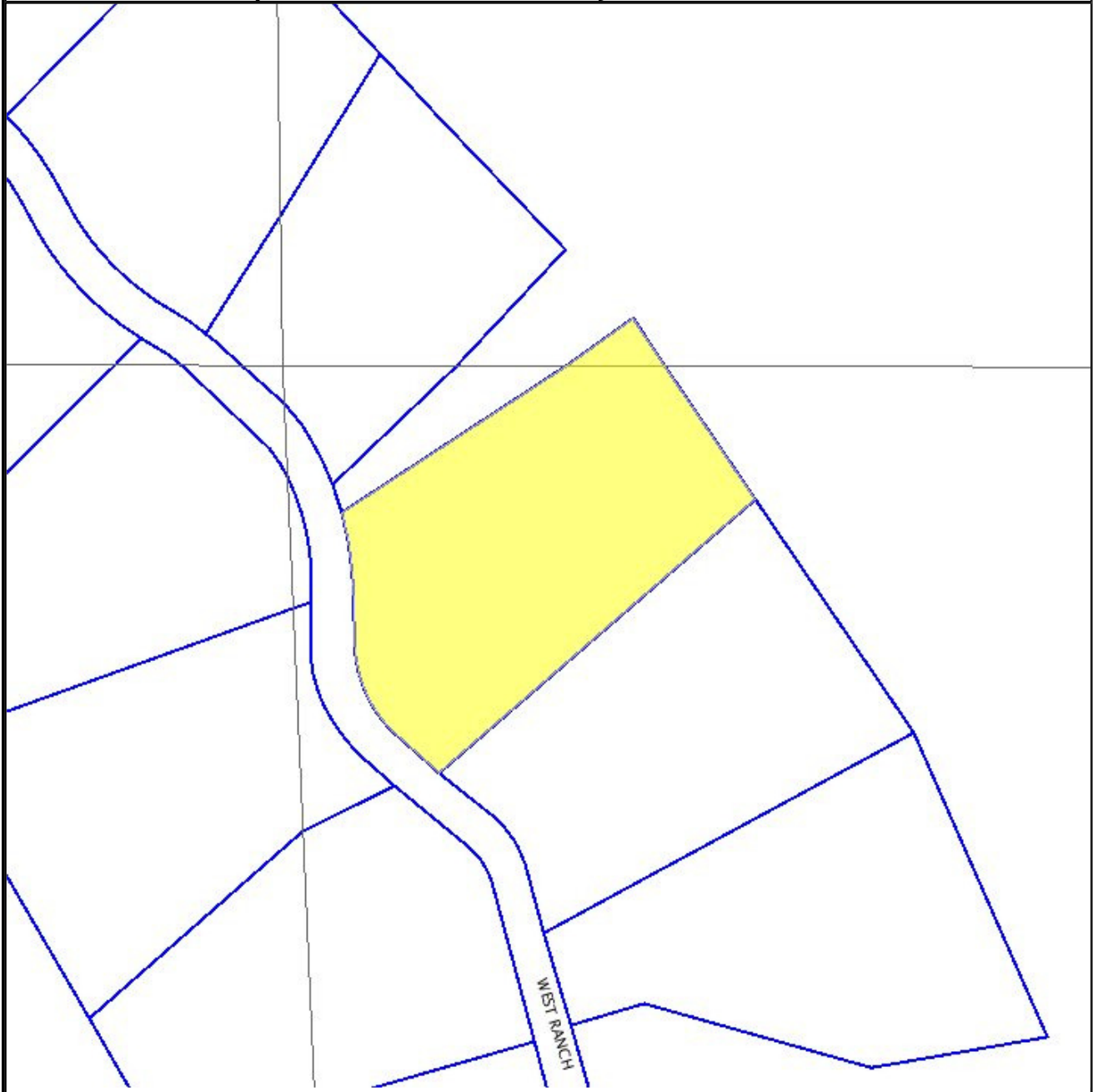


**Map from the Jefferson County Assessor's Web Site**



**THIS MAP IS NOT TO SCALE**

It was produced July 4, 2010, using ASPIN version 1.1.0 on the Jefferson County Assessor's Web site. Parcel data last updated: June 28, 2010







**DISCLAIMER**

This map is not necessarily accurate by surveying standards. DO NOT USE FOR LEGAL CONVEYANCE.

Map text including parcel numbers, subdivision names, etc., is available on the county's static parcel maps, which are accessible from the Jefferson County Web site.

Not all legend elements will be visible on this map.

**LEGEND**

-  Parcel Boundaries
-  Parcel Map Boundaries
-  Jefferson County Boundary
-  Unincorporated Jefferson County
-  Surrounding Counties
-  Right of Way

-  Arvada
-  Bow Mar
-  Edgewater
-  Golden
-  Lakeside
-  Lakewood
-  Littleton
-  Morrison
-  Mountain View
-  Superior
-  Westminster
-  Wheat Ridge