



ST MARY'S GLACIER HOME
IDAHO SPRINGS, COLORADO

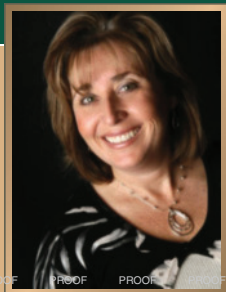


EVERGREEN



Quiet and scenic, warm and comfortable, this home offers one level living with three bedroom , two bathroom; one is a newly updated full bathroom, 1224 square feet, wood burning stove, lots of storage space; 3 sheds, front deck, mud room and a beautiful kitchen with huge center island and lots of counter space. This home features newly installed carpet, paint, roof, hot water heater, kitchen counter tops and more. Located near lots of recreational activities; hiking, skiing, river rafting, fishing and more. You'll also love the charming mountain town of Idaho Springs which provides all kinds of amenities including a wide selection of restaurants, coffee shops and unique shopping experiences.

\$119,500



LINDA PINKUL

Broker Associate

720.479.5445 Direct

303.956.4068 Cell

303.674.6667 Office

Linda.Pinkul@wisper.net

www.LindaPinkul.com



RESIDENTIAL BROKERAGE

EVERGREEN